

2006 US SAILING Paralympic Pre-Trials

Single Person Keelboat: 2.4mR

Two Person Keelboat: SKUD18

Three Person Keelboat: Sonar

SAILING INSTRUCTIONS

AMENDMENT #1

ITEM #1

SI 6.1 is changed as follows:

Friday, 1100 first Warning Signal

Saturday, 1100 first Warning Signal

ITEM #2

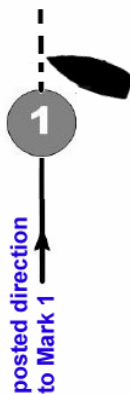
SI 10.3

New marks for the extended windward mark for the Sonar Class will be yellow tetrehadrons with black bands.

ITEM #3

SI 15.1 is replaced with:

- 15.1 If no boat's hull, crew or equipment in its normal position has, after *starting*, crossed the extension of a line through mark 1 on the bearing posted by the race committee within 30 minutes, the race will be abandoned.



Date/Time: _____ OSC Rep. _____